

County Commissioner District #2

Land Area:  
Square Miles - 34  
Acres - 21,747

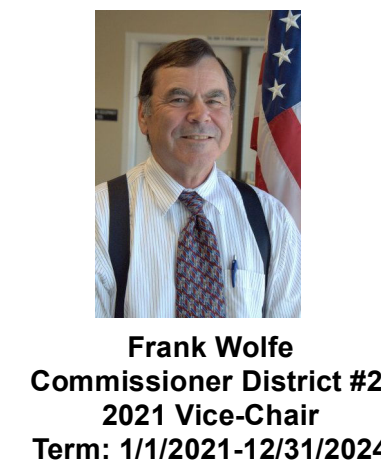
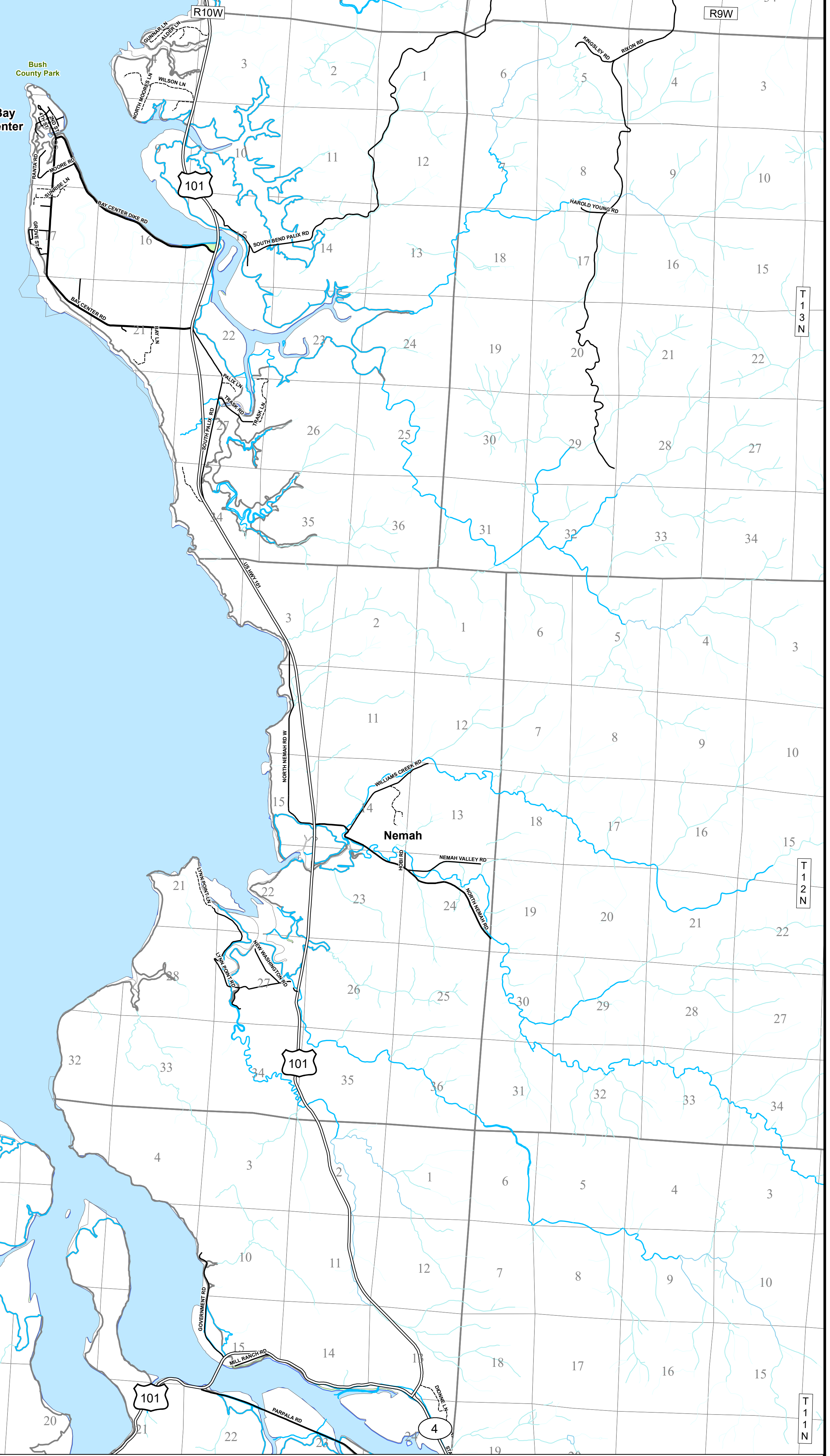
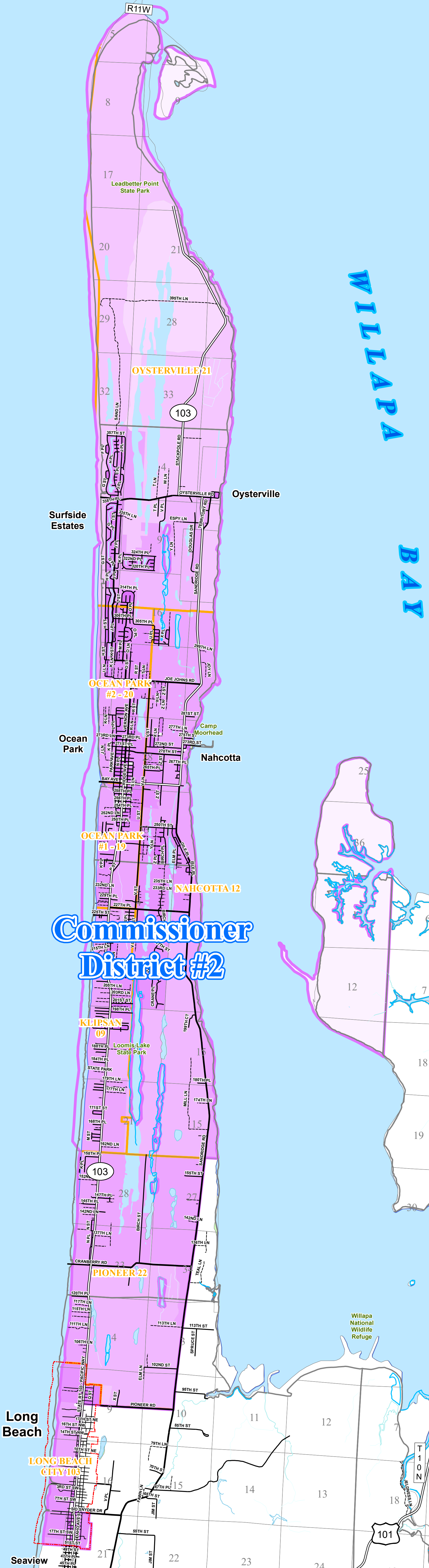
Population:  
7,781

Roads:  
Total Miles - 159  
City Roads - 18  
County Roads - 86  
Private Lanes - 35  
State Highways - 20

PACIFIC OCEAN

WILLAPA BAY

Commissioner District #2



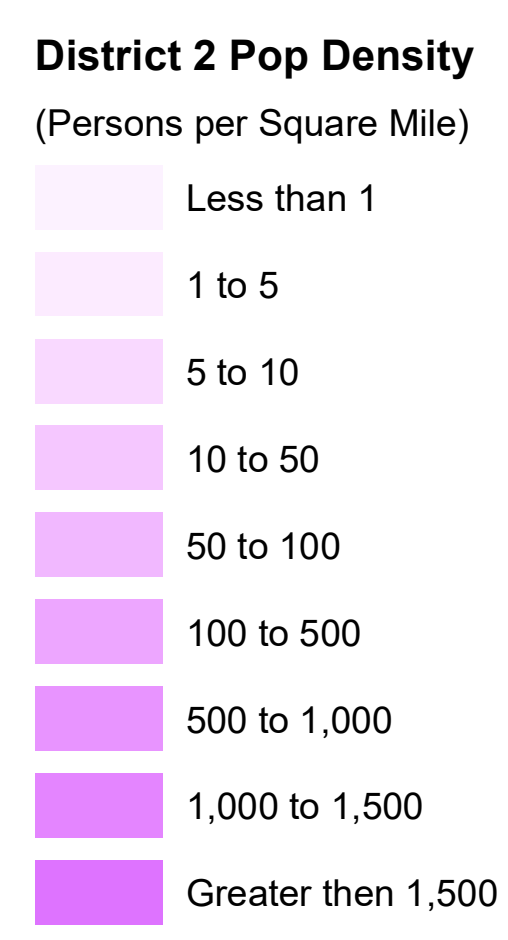
Frank Wolfe  
Commissioner District #2  
2021 Vice-Chair  
Term: 11/1/2021-12/31/2024

# Pacific County

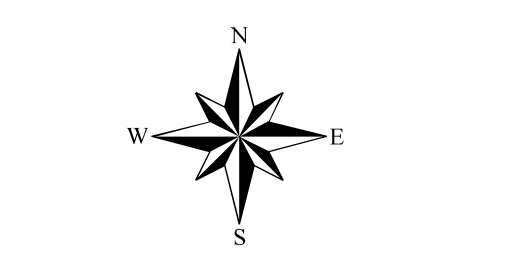
Department of Public Works  
Geographic Information System



## County Commissioner District #2



with  
Voter Precincts  
&  
Population Density



0 3,500 7,000 Feet  
SCALE: 1:42,000

- Legend**
- Commissioner District #2
  - City Limits
  - Precincts
  - Townships
  - Sections
  - Shoalwater Reservation

Disclaimer: This map is intended for reference purposes only. Any other use other than that intended shall be at the user's responsibility. The information appearing on this document was obtained from a variety of sources, as identified on the map. The user acknowledges that inaccuracies, errors, and omissions may be contained within the data used to prepare this product, and such data may originate from other sources than Pacific County.

Any questions regarding the information presented herein or data used to prepare this product should be directed to the contact organization. Pacific County Department of Public Works GIS Program or other local, state, federal agency, as listed herein.

Contact Organization:  
Pacific County  
Department of Public Works  
Geographic Information System  
211 N Commercial St.  
Rainier, Washington 98577

Resco 642-9368  
Naselle 464-7736  
South Bend 875-9368  
Twinsland 265-0891  
Ostland Pacific County (509) 675-9368

Blair Swonger  
Senior GIS Analyst ext. 2283  
e-mail: bswonger@pcc-pacific.wa.us